

PART OF S.W. 1/4 OF SEC. 22, T.7N., R.1E., S.L.B. & M.

57

PATIO SPRINGS UNIT NO. 1

LOTS 27 TO 36, 75 TO 78, G & H

IN WEBER COUNTY

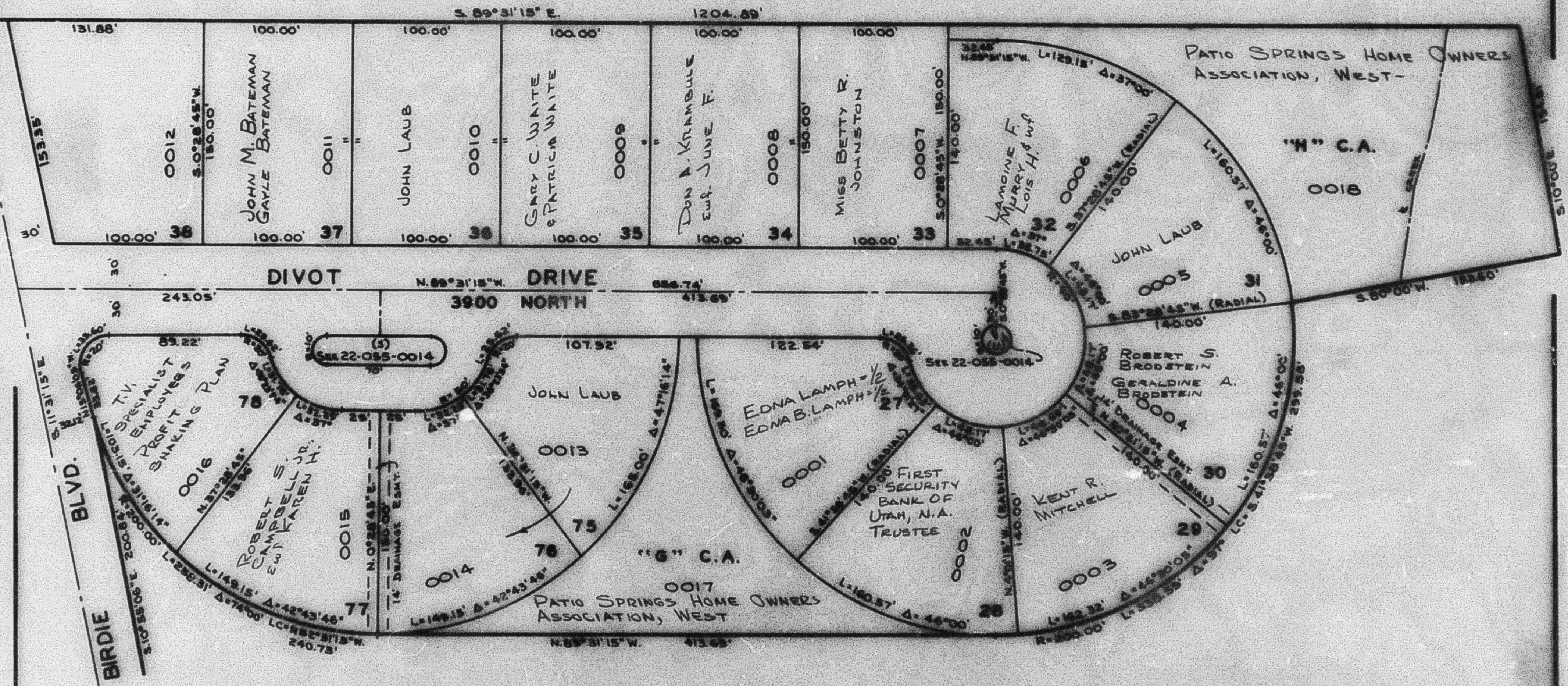
TAXING UNIT: 28

SCALE 1" = 60'

PREFIX: 22-057

EXCEPT WHERE OTHERWISE SHOWN,
ALL LOTS ARE OWNED BY: COSEC & CO.

SEE PAGE 17



SEE PAGE 16